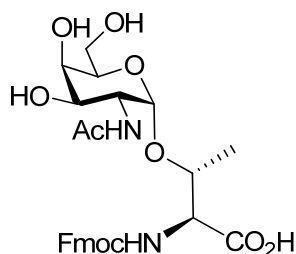


Title [Times New Roman, 16 pt, centered]

Name1 Surname1,^a Name2 Surname2^a and Name3 Surname3^b [completed list of authors, Times New Roman 12 pt, centered, single spaced, author that presents the communication underlined]

a) Department, Center and Institution of authors 1 and 2, postal address of the Center of both authors; b) Department, Center and Institution of author 3, postal address of the Center of this author; e-mail: xxx@xxx.xx of the author that presents the communication [Times New Roman 10 pt., centered]

Bodytext of the abstract in Times New Roman 12 pt., justified and single spaced. Maximun length is an A4 page. Figures, schemes, equations or tables will be inserted in the text. Images only in B&W or grey scale and in .tif or .jpeg formats. Authors will be responsible for the text legibility and characters inserted in figures, schemes, equations or tables.



References (3 maximun in ACS's style) will be cited in the text between brackets as superscript and with arabic numbers, for instance.^[1] Each reference will be introduced in the *References* section, at the end of the bodytext of abstract, indicating the corresponding number between brackets; text of the references in Times New Roman 10 pt., justified, following the examples shown.^[1-3] Multiple references (a), (b)... are not allowed.

References

- [1] Surname1, Initial1.; Surname2, Initial2. *Publication* **Year**, *Volume*, Initial page.
- [2] Surname1, Initial1.; Surname2, Initial2. *Book*; Editorial: City, Year.
- [3] Surname1, Initial1.; Surname2, Initial2. *Title of the chapter*; Surname3, Initial3., Surname4, Initial4. Eds.; Title of the complete work; Editorial: City, Year.